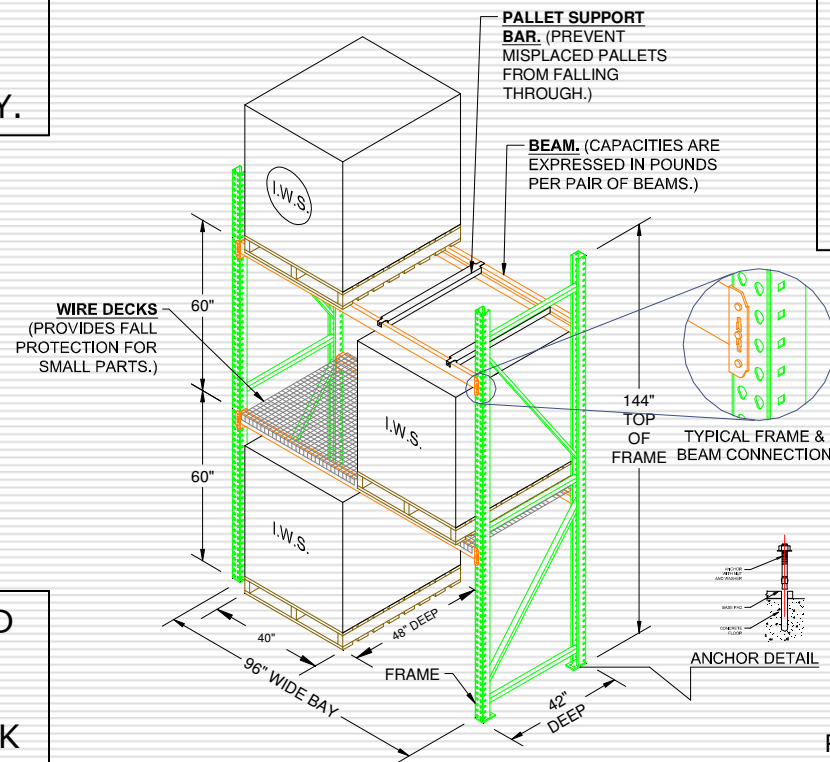


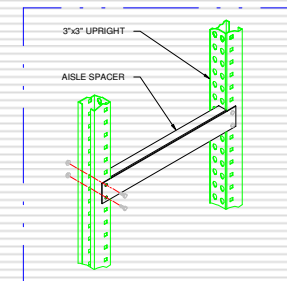
Typical Selective Bay

PALLETS TYPICALLY OVERHANG 3" ON FRONT & BACK OF BAY.

FOR UPPERMOST LOAD LEVEL, LOCATION OF SHELF BEAM SHOULD BE 6" LESS THAN FORK TRUCK'S MAXIMUM LIFT HEIGHT.



SHOWN HERE IS A ROLL FORM DESIGN. STRUCTURAL RACK ALSO AVAILABLE FOR SELECTIVE RACK SYSTEMS.



ROW SPACERS. (USED FOR ROWS THAT ARE BACK TO BACK OF ONE ANOTHER)